



AMA  
Chartered  
Club  
#1140

# The Tail Spinner

Greater Southwest Aero Modelers

P.O. Box 1355

Bedford, TX 76021

<http://www.flygsw.org>



**AMA Gold  
Leader Club**

*The Greater Southwest Aero Modelers, Inc. is a nonprofit organization. Membership is nondiscriminatory and open to anyone who agrees to abide by Club By-Laws. A condition of membership for insurance purposes is current affiliation with the Academy of Model Aeronautics (AMA). Our flying field is located at 6903 Randol Mill Road, 1/4 mile east of exit 26 off of Loop 820 at N 32°46.895' W 97° 12.361'. Visitors are welcome whenever the gate is unlocked. Free flight training instruction is available to members from 6:00 PM to dusk on Monday and Wednesday while Daylight Savings Time is in effect. Regular Club meetings are held on the second Tuesday of each month at 7:30 PM at the McDonalds Restaurant, 769 W Airport Fwy, Hurst TX. Take the Precinct Line exit, and the McDonalds is on the east bound access road.*

President .....	Tim Lovett .....	(817) 268-7797
Vice President(s) .....	Lee Rice .....	(817) 431-5408
Secretary .....	Sonny Coleman .....	(817) 251-3940
Treasurer .....	Tom Russell .....	(817) 457-3236
Newsletter Editor .....	Roy Baker .....	(817) 545-4031

## The First Fun Fly of the Season

Do you think you who is the best pilot in GSW

I know you think you know but do you???  
Anyone can SAY they are the best

But there is only one way to KNOW who is the best

We call it SKINS on the wall-who puts it on the line in front of everyone and says I'M THE BEST AND I CAN PROVE IT

WELL NOW WE KNOW FOR SURE

The first of the year fun fly was held this past weekend and we have a NEW top dog at GSW

1. Lewie Moore
2. Frank Rowell
3. Chuck Rovell
4. Ray Lopresti
5. Ed Couch
5. Lawrence Harville
7. Ricardo Siwa
8. Scott Franklin

It was a real test of skill and daring. 3 real killer events and it was pretty tough fighting. Lewie won 2 of the three events.

NO CRASHES

Pancakes and sausage were cooked to perfection by Jim and Walt  
Thanks guys

SO next time you see one of the real men (see list of 8 above) don't be bashfull about asking for their autographs--even though they are the TOP 8 flyers in GSW and obviously tower over you lesser pilots --all 8 of them are good guys and I know

they will be glad to let you buy them a drink at the field.

If you disagree with the list of the TOP Flyers in GSW there is only ONE thing you can do about it.

Enter the next fun fly and EARN the right to be call one of the top pilots in GSW

DONT TALK--FLY

Your humble reporter  
Lawrence Harville , Contest Director

--I tied as the 5th best pilot in GSW (only because I had motor problems-no wait it was radio problems-no wait I got it I WAS CHEATED BY THE CONTEST DIRECTOR

**Next Meeting:**

**June 10, 2008**

**7:30PM**

**McDonalds**

**769 W Airport Fwy**

**Hurst**



**June Event  
Calendar**

JUN 06-08--Katy, TX (C) 2008 Houston Helicopter Fun-Fly. Site: Club Field GPS: 29.8667, -95.8161. Events: Sponsor: Space City R/C #1259. CD: Ty Prause, 1390 Reese Lane, Columbus, TX 78934. Phone: 979-732-2301(day) 979-732-9072(eve) E-Mail: [typrause@hotmail.com](mailto:typrause@hotmail.com) WebSite: [www.spacecityrc.com](http://www.spacecityrc.com)

JUN 07--Graham, TX (C) 3rd Annual Fly-In. Site: Lakeside Air Park GPS: 33.1239583, -98.6280472. Events: Sponsor: Graham R/C Flyers #4053. CD: Robert Castor, 4320 Edgehill, Wichita Falls, TX 76306. Phone: 940-855-8200(day) 940-855-8200(eve) E-Mail: [gaep@wf.quik.com](mailto:gaep@wf.quik.com) GR/CF 3rd Annual Fly-In for Big and Little birds. Glo, Gas, or Electric. Fixed wing only. 30x300' runway. Cash Prizes, 3 categories; best civilian, Military electric, of show. Grab bags. RVs OK; No hook-ups. Food vendor on site. Landing fee \$10. Contact CD for additional info and details.

JUN 07-08--Monaville, TX (C) Warbird Fly-In. Site: Bomber Field. Events: Sponsor: Bomber Field, Inc. #2307. CD: Nick Stratos, 10003 Rocky Hollow, LaPorte, TX 77571. Phone: 713-857-4108(day) 281-471-6762(eve) E-Mail: [nls@houston.rr.com](mailto:nls@houston.rr.com) WebSite: [www.bomberfieldusa.com](http://www.bomberfieldusa.com) Any size warbird, any country. \$20 landing fee. Early flying O.K. Plenty of RV parking, no hook-ups. We will have hamburgers, cold drinks, and souvenirs. Plaques will be given away. Paved & grass runways. Jets must have waiver. GPS: 29.93937, -96.0594

JUN 07-08--Amarillo, TX (C) 11th Annual

7336 Grapevine Hwy.  
Fort Worth, Texas 76118  
(817) 589-2624



**Ding's Airport  
Pawn & Hobby**

Confidential Loans

**We Specialize in R/C  
Planes**



**ROY'S  
HOBBY  
SHOP**

**ALL THE RIGHT STUFF AT THE RIGHT PRICE**  
Radio Control Planes, Cars and Helicopters

1309 Norwood  
Hurst, Texas 76053  
Metro 268-0210

See Us for B&B (Bennett) Products  
and Zenoah Engines

Spring Fun-Fly. Site: Buffalo Airport GPS: 35.0678138, -101.877227. Events: Sponsor: Buffalo R/C Club #3834. CD: Brian O'Donnell, 6405 Arden Road, Amarillo, TX 79109. Phone: 806-654-9300(day) 806-358-4627(eve) E-Mail: [brotherodie@hotmail.com](mailto:brotherodie@hotmail.com) WebSite: [www.buffal](http://www.buffal) Drawing for R/C equipment, \$250-

\$500 value. All profits go to Make-a-wish Foundation.

JUN 07-08--Huffman, TX (AA) 2008 JeteroPattern Classic. Site: Club Field. Events: 401, 402, 403, 404, 406 (JSO) Sponsor: Jetero R/C #1218. CD: John Forestieri, 18010 Woodgum, Spring, TX 77388. Phone: 713-594-8901(day) 713-594-8901(eve) E-Mail: [flyguy77388@yahoo.com](mailto:flyguy77388@yahoo.com) WebSite: [www.jetero.comTrophies](http://www.jetero.comTrophies) 1st thru 3rd in each numbered event, JSO combined. Thru 5th place in Sportsman.

\$35 entry fee includes pilot lunch on Saturday. Field open for practice Friday at noon. Should be another great one! Flyer and map on club web site. GPS: 30.0613889, -95.021389

JUN 08--Temple, TX (C) 18th Annual Temple Fun-Fly. Site: McGregor Park. GPS Coordinates: 31.21145541287, -97.478079491377 Events: Sponsor: Temple  
*(Continued on page 3)*

**Tail Spinner Submissions**

Items for the Tail Spinner are due by the 25th of the month. Remember that ads are free to members. Send them to:

Roy Baker  
(817) 545-4031  
(817) 455-0922 (cell)

(e-mail) [rbaker19@tx.rr.com](mailto:rbaker19@tx.rr.com)

## May Secretary's Report

The May 2008 GSWAM business meeting was called to order by club President Tim Lovett at our new business meeting location at the McDonalds Restaurant at 769 W. Airport Freeway Hurst, TX 76053.

The minutes of the April meeting as printed in the newsletter were approved.

**Field Report:** Lee Rice reported that except for the installation of cut-off floats on the water trap pumps, all flying field upgrades are to be postponed until further notice.

**Treasurer's Report:** Tom Russell reported this months major expenditures as being the brush hog mowing of the runway perimeter and the purchase of a Cub Cadet tractor mower

### Old Business:

**Noise Abatement Ruling:** The attending club members voted to adopt the International Miniature Aircraft Association's (IMAA) sound control program as recommended by the AMA, and will take effect June 1, 2008. A transition period will be in effect immediately, and aircraft will be randomly spot checked as time permits. Sound rules will be posted in both the club newsletter and web site.

### New Business:

#### Bylaw Amendment:

The proposed bylaw amendment's purpose is to redefine the definition of a GSWAM Family Member. The attending club members voted to define a Family Member as a club member who is a current AMA member, is 18 years of age or less, and is sponsored by a current GSWAM club member. The Family Member bylaw amendment was passed via a majority vote by the attending club members.

**Model of the Month:** This month we had four models on display, of which three were contenders for the Model of the Month Award. The first plane on display was Bill Tarver's highly customized Sig Cobra, which featured droppable bombs and flaps, and is powered by an O.S . . . . 32. The second plane was Lawrence Harville's 15 year old P-38 kit that he just got around to

finishing. The Lightning is powered by two O.S. 1.08 engines. Note: Lawrence decided to only display the Lightning and not enter it into the competition. Next, was Bruce Cree's beautiful KMP F-7F Tigercat. The Tigercat has an 84" wingspan and is powered by two RCV 1.20 engines. Next, Dave Cleveland brought a World Models electric powered Cessna Skyhawk. The winner was ..... Bill Tarver's Sig Cobra!

**Club Web Site:** Be sure to visit the Greater Southwest Aero Modeler's web site at: <http://www.flygsw.org> . There is a current membership roster in the "Members" area and be sure to check out the club's "Tech" site, there's an abundance of useful information available.

Sonny Coleman - Secretary  
817-251-3940  
[Sonny@flygsw.org](mailto:Sonny@flygsw.org)

---

## Club events for 2008

### June

June 8th  
Biplane Flyin; Any size biplane eligible. Concessions, Tim Lovett CD

June 21st  
Pylon Racing

### July

July 5th Family picnic, Fun Fly and Flyin

July 27th  
Pylon Racing

August Fun Fly 23 Robert McGee. Mark Foster, and Chris Moon will coordinate Event.

### September

September 20  
Warbird Flyin, Any size Warbird eligible, concessions, Lawrence Harville CD

### October

October 11  
Eighth Annual GSW All scale flyin, any size scale airplane flown in scale manner. Concessions Max Ficken CD

### November

November 8th Fun Fly  
Food Drive Flyin for Club. Entry fee nonperishable foodstuffs to be donated to food bank

### December

December 13th

Toys for Tots entry fee new unwrapped toy. Flyin. any size airplane Max Ficken CD

If you have questions or want to conduct an event please call me at 817-691-9632 Max Ficken

If you would like to host a fun fly or one of the events listed pick one of the dates or events listed and call me or volunteer at the meetings.

Aeromodelers #1053. CD: Don Hinkle, 11591 Pritchard Road, Temple, TX 76501. Phone: 254-982-4746(eve) E-Mail: [dchink58@aol.com](mailto:dchink58@aol.com) Class C Open Fun Fly two events. 1st event: timed loops and rolls, 2nd event: spot landing and balloon bust. Pilot's meeting 10 a.m.

JUN 13-15--Aubrey, TX (C) DFW Jet Rodeo. Site: Club Field GPS: 33.240492, -96.938177. Events: Sponsor: North Dallas Radio Control Club #1238. CD: Greg Pulcini, 2602 Sherrill Park Drive, Richardson, TX 75082. Phone: 972-690-5863(day) E-Mail: [gpulcini@aol.com](mailto:gpulcini@aol.com) WebSite: [www.ndrcc.com](http://www.ndrcc.com) Turbine & Ducted Fan Only. See website for maps and event info. 650' x 50' paved runway. Camping & RV hookups, \$5 per night. Awards, raffles. Registration \$25.

JUN 13-15--Grand Prairie, TX (C) Heli Blaze. Site: GTRC Field GPS: 32.57, -97.044722. Sponsor: Golden Triangle R/C Club #610. CD: Ron Wedel, 738 Forest Park Place, Grand Prairie, TX 75052. Phone: 972-672-2082(day) 972-672-2082(eve) E-Mail: [ron@texaswedel.com](mailto:ron@texaswedel.com) WebSite: [www.gtrcc.org](http://www.gtrcc.org) First annual Heli mix-it-up!! See [www.GTRCC.org](http://www.GTRCC.org) for directions/motels. Vendor space available. Many sponsors. Raffle every 30 minutes. Nice awards for all events pilot stations. Local News coverage. Best auto with \$50 cash prize. Timed hover for beginners. Separate area and timed inverted hover for experts and one unknown with a cash prize of \$25. Best scale \$25 cash prize. Fee \$20 with \$5 discount for early registration after 9a.m. on Friday till dark, Open flying field all day Friday, Saturday Fun Fly-Sunday open flying. AMA required at the gate, also sign up for AMA at the event. Lunch and a brisket dinner Saturday night with trimmings for pilots and then night flying to top it off. Known bad channel 41, Transmitter impound used except 2.4!

JUN 14--Lake Dallas, TX (C) Float Fly. Site: Lake Dallas GPS: 33.123461, -97.015191.

Sponsor: Falcons of Lake Dallas #1949. CD: Gerald Sanders, 3337 Pine Tree Court, Farmers Branch, TX 75234. Phone: 972-247-7611(day) 972-247-7611(eve) E-Mail: [geraldsanders@tx.rr.com](mailto:geraldsanders@tx.rr.com) WebSite: [www.falconsrclub.com](http://www.falconsrclub.com) Come fly with the Falcons at our Bi-annual float fly. Landing fee \$15. Pilot's meeting 9a.m.. Bring AMA card. Frequency board and impound. Camp sites available. Lunch available by AI's famous chuck wagon BBQ. Lots of prizes, lots of fun. Visit [www.falconsrclub.com](http://www.falconsrclub.com).

JUN 14--Kingsbury, TX (C) Shupe Memorial Cub Fly. Site: Old Kingsbury Aerodrome. GPS Coordinates: 29.6343667, -97.811 Events: Sponsor: Tri-City Flyers #850. CD Andy Clapp, 419 Canterbury Lane, Converse, TX 78109. Phone: 210-256-3020(day) 210-658-879(eve) E-Mail: [zbra54@sbcglobal.net](mailto:zbra54@sbcglobal.net).

JUN 14-15--Dallas, TX (AAA) Dallas Aero Summer Heat. Site: Samuell Hobby Park, Dallas, TX. GPS Coordinates: 32.866894813795, -96.671481808784 Events: 313, 323 (JS)(O); 319-321, 324-326 (JSO); Goldberg(JS)(O), Sport Goodyear, Quickie Rat, Old Time Stunt, Classic Stunt, Balloon Bust, .15 Profile Carrier (JSO); Profile Carrier (Sportsman/Expert) Sponsor: DMAA #1902. CD: Tom Niebuhr, 7173 FM 1377, Blue Ridge, TX 75424. Phone: 972-736-3780(day) (same) (eve) E-Mail: [blueskymodels@earthlink.net](mailto:blueskymodels@earthlink.net) WebSite: <http://www.DMAA-1902.org>

JUN 18--Ft. Worth, TX (C) Thunderbirds Old Farts Fly-In. Site: TBird Field GPS: 32.6391194, -97.4723583. Events: Sponsor: Fort Worth Thunderbirds #1217. CD: Charles McLeroy, 4037 Aragon Drive, Ft. Worth, TX 76113. Phone: 817-292-4801(day) E-Mail: [chpe12@sbcglobal.net](mailto:chpe12@sbcglobal.net) No food will be available so bring your brown bag. Soft drinks will be furnished. Fly Safe; Have Fun

JUN 20-22--Waco, TX (Cr) IMAA Mini-Fest. Site: Lake Waco Speegleville Park, Waco, TX. Events: LF \$15 9am reg. 10am fly, RV SF Food/Bev 800' x 70' PR & taxi way, Shelter. 16 RV hookups (limited electric) Concession stand, water, toilets unlimited parking - Bleachers Hotels/Restaurants close by. Sponsor: HOTMAC #613. CD: Larry Garrett, 15359 China Spring Rd., China Spring, TX 76633. Phone: (254) 717-7929(day) E-Mail: [garrettlarryd@aol.com](mailto:garrettlarryd@aol.com) WebSite: [www.hotmacrc.com](http://www.hotmacrc.com).

JUN 21--Aubrey, TX (C) North Dallas RC Combat. Site: Eagle Field GPS: 33.240492, -96.938177. Events: Sponsor: North Dallas RC Club #1238. CD: Ed Kettler, 6725 Grant Lane, Plano, TX 75024. Phone: 469-867-7981(day) E-Mail: [ed.kettler3@verizon.net](mailto:ed.kettler3@verizon.net) WebSite: [www.ndrcc.com](http://www.ndrcc.com) Exciting RC Combat with the best pilots in the country! RCCA SSC and scale 2548 World War 2 fighters will be flown. Visitors and newcomers Welcome! Hard hats required for pilot and crew.

JUN 21--San Antonio, TX (A) Open Sailplane & HL Upstart. Site: Club Field. GPS Coordinates: 29.472347941141, -98.209254110134 Events: 441, 444 (JSO) Sponsor: Heart Of Texas Soaring Society #2203. CD: John Renker, 3330 Quakertown, San Antonio, TX 78230. Phone: 210-696-2949(day) 210-696-2949(eve) E-Mail: [jrenkerjr@satx.rr.com](mailto:jrenkerjr@satx.rr.com) WebSite: [www.hotss-rc.org](http://www.hotss-rc.org) Open Class Thermal Duration with landing. Hand Launch Glider with 60 inch wing span orless.. Man on Man launch with equal set pull club upstarts. Scoring base on first to last down. 5 min.max.

JUN 21--Texas City, TX (C) Annual Braden Clough Big Bird. Site: Holland Park. GPS Coordinates: 29.440686, -94.996378 Events: Sponsor: Texas City R/C Club #1075. CD: Michael Walther, 16611 Rigger Lane, Houston, TX 77062. Phone: 713-253-0345(day) E-Mail: [mwrccpylonracer@sbcglobal.net](mailto:mwrccpylonracer@sbcglobal.net) WebSite: [www.tcrcc.org](http://www.tcrcc.org)

JUN 21-22--Seguin, TX (AAA) TCC 61st Annual Regional FF Champs. Site: Auxiliary Airfield, Seguin, TX. GPS Coordinates: 29.5657858, -97.9083367 Events: Cat III: 101, 102-103, 104-105, 102-103C. 104-105C, 120, 140, 150-155, 160-162 (JSO); 142, 163 (J) (SO) Sponsor: Texas Cloud Climbers #606. CD: Richard Smith, 1812 Chatfield Lane, Allen, TX 75002. Phone: 972-342-1029(day) (same) (eve) E-Mail: [okiebird667@aol.com](mailto:okiebird667@aol.com).

JUN 21-22--Kingsbury, TX (C) (WWI) Dawn Patrol Rally. Site: Old Kingsbury Aerodrome. Events: Sponsor: Tri-City Flyers #0850. CD: Dean Lukover, 1810 Flintbed Road, San Antonio, TX 78232. Phone: 210-494-4619(day) 210-495-4619(eve) E-Mail: [lukoverd@sbcglobal.net](mailto:lukoverd@sbcglobal.net) WebSite: [www.tricityflyers.com](http://www.tricityflyers.com) Any aircraft up to 1922. Large grass runway. Lunch for one day included with \$20 registration. Bring your own canopy. Overnight camping OK but no hook-ups. Flying Saturday 9a.m. to 4p.m., Sunday 9a.m. to 2p.m. Registration opens 8a.m. both days. Win a flight in a full sized bi-plane

JUN 21-22--Amarillo, TX (A) ARKS Annual Sailplane Contest. Site: Club Field. GPS Coordinates: 35.030431, -102.02721 Events: 442, 444, 460 (JSO) Sponsor: Amarillo Radio Kontrol Society #604. CD: David Reighley, 4305 Emil Avenue, Amarillo, TX 79106. Phone: 806-690-3174(day) E-Mail: [reighley@nts-online.net](mailto:reighley@nts-online.net) WebSite: [www.arksclub.org](http://www.arksclub.org) RV Parking, No Hook-ups, Winch Hi-Start available. Bring shade and chairs.

JUN 21-22--Nederland, TX (AA) Ray Rhodes Memorial Pattern Contest. Site: Texan Field. GPS Coordinates: 29.994617, -94.0026 Events: 401, 402, 403, 404 & 406 (JSO) Sponsor: Mid County RC Club #622. CD: Albert Brammer, 2504 Canal Avenue, Nederland, TX 77627. Phone: 409-724-0476 (day) 409-718-2404(eve) E-Mail: [buddyonrc@aol.com](mailto:buddyonrc@aol.com) WebSite:

[www.midcountyrcc.com](http://www.midcountyrcc.com) See club web site for map and event flier

JUN 21-22--Abilene, TX (AA) 2008 Abilene IMAC. Site: Sea Bee Park. GPS Coordinates: 32.537712, -99.715414 Events: 411, 412, 413, 414, 415 (JSO) Sponsor: Abilene RC Society #602. CD: Joe Buie, 1010 Reeves Street, Abilene, TX 79602. Phone: 325-674-9125(day) 325-674-9125(eve) E-Mail: [jbui@clearwire.net](mailto:jbuie@clearwire.net) WebSite: [www.abilenercsociety.com](http://www.abilenercsociety.com) Sea Bee Park on FM600, North of Abilene on Ft. Phantom Lake. Entry Fee - \$35 Awards for 1st thru 3rd in each numbered event, JSO combined.

JUN 28--Sherman, TX (Cr) Texoma R/C Modelers Annual Big Bird. Site: Club Field, west of Sherman TX. Sponsor: Texoma R/C Modelers #276. CD: David S. Taylor, 114 S. Broadway, Bells, TX 75414. Phone: (972) 979-4642 (day) E-Mail: [davidandstacey1@verizon.net](mailto:davidandstacey1@verizon.net) WebSite: [www.texomarc.org](http://www.texomarc.org) LF \$15 reg 9am fly 10am RV PR GR food/bev

JUN 28--Haskell, TX (C) Texas Chiefs Open House. Site: Haskell Model Airport. Sponsor: Texas Chiefs MAC #1732. CD: Gary Davis, 1502 Hudson Street, Stamford, TX. Phone: 325-773-5500(day) 325-773-5500(eve) E-Mail: [gary@davis-domain.com](mailto:gary@davis-domain.com)

Houston, TX (C) 3rd Annual BAYOU City Flyers Electric Fly-In. Site: Scobee Field. GPS Coordinates: 29.726492156212, -95.691130979158 Events: Sponsor: Bayou City Flyers #901. CD: Jim Dieckow, 1265 Witte Road, Houston, TX 77055. Phone: 713-299-8413(day) 713-299-8413(eve) E-Mail: [terroridactyl@yahoo.com](mailto:terroridactyl@yahoo.com) WebSite: [www.bcflyers.com](http://www.bcflyers.com) Thanks to the Corps of Engineers @ Harris county precinct 5 we have a great field with recent upgrade. Landing fee is \$20 with pilot meal provided.

JUN 28--Sherman, TX (C) Texoma R/C Modelers Annual Big Bird. Site: Pete Darter Flying Field. GPS Coordinates: 33.644039471458, -96.750310875496 Events: Sponsor: Texoma RC Modelers #276. CD: David Taylor, 114 South Broadway, Bells, TX 75414. Phone: 972-979-4642(day) 903-965-7250(eve) E-Mail: [davidandstacey1@verizon.net](mailto:davidandstacey1@verizon.net) WebSite: [www.texomarc.org](http://www.texomarc.org) \$15 landing fee. 250ft x 25ft paved runway. Grass parallel to paved. Pilot lunch provided. See our web site for field directions. Aircraft limited to true 1/4 scale or 80inch monoplane and 60 inch bi-plane. IMAA Aircraft rules apply; IMAA membership not required



Sunday, June 8, 2008

# Old Culleoka Park, on Lake Lavon

\$10 Landing Fee

Current AMA license required

Retrieval Boat - Transmitter Impound - Lunch Available

Great Site, Real Easy Access to the Water

**Great Spectator Area - Great Raffle Prizes! - Peoples Choice Prize**

**Get those floats ready!!!**

8:30	AM	Check-In and Registration
9:00	AM	Pilots Meeting
9:15	AM	Open Flight
11:45	AM	Raffle Drawing #1
Noon		Grills Opens and Lunch Served (Hamburgers, Hot Dogs, Chips, and Cold Drinks)
12:45	PM	Peoples Choice Award and Raffle Drawing #2
1:00	PM	Open Flight until 5:00 PM
3:00	PM	Raffle #3
5:00	PM	Clean-up!

Map and directions on back – Check website for information at [www.rfcc.org](http://www.rfcc.org)

### Directions to the Float Fly Site

Take US 75 Central Expressway north from Dallas to Bethany Drive in Allen, Tx. Take a right (east) on Bethany Drive (changes to West Lucas Road just east of Allen) and go approximately 6.1 miles to the intersection of West Lucas Rd and FR 3286. Take a left on FR 3286 and go approximately 3.8 miles (you will cross two bridges) to the "Y" with CR 546, continue east on 546 to CR 982. Turn south on CR 982 and go about ¼ mile to County Road 1099 (Willow Run Dr.). Go east on CR1099 approximately ½ mile, the entrance to the float site is straight ahead where CR1099, and CR1102 meet. Proceed to the boat ramp to unload, then park in the parking lot to the East.

Alternate Route Take US 75 north to Parker Road in Plano. Go east on Parker road (turns into FR 2514) approximately 8.2 miles to FR 1378. Take a left on FR 1378 and go approximately 2.2 miles to the intersection of FR 1378 and FR 3286. Take a right on FR 3286 and continue with above directions.

NOTE: THE BRATONIA PARK FLYING FIELD IS JUST 1.5 MILES NORTHWEST OF THIS FLOAT FLY SITE, AND WILL BE CLOSED FROM 9:00AM, UNTIL 5:00 PM ON SUNDAY 6/08/08

Contact: Allen Delger – (H) 972-542-2956 - (W) 972-952-5465 – [a.delger@sbcglobal.net](mailto:a.delger@sbcglobal.net)



# The Tail Spinner

Greater Southwest Aero Modelers  
P.O. Box 1355  
Bedford, TX 76021

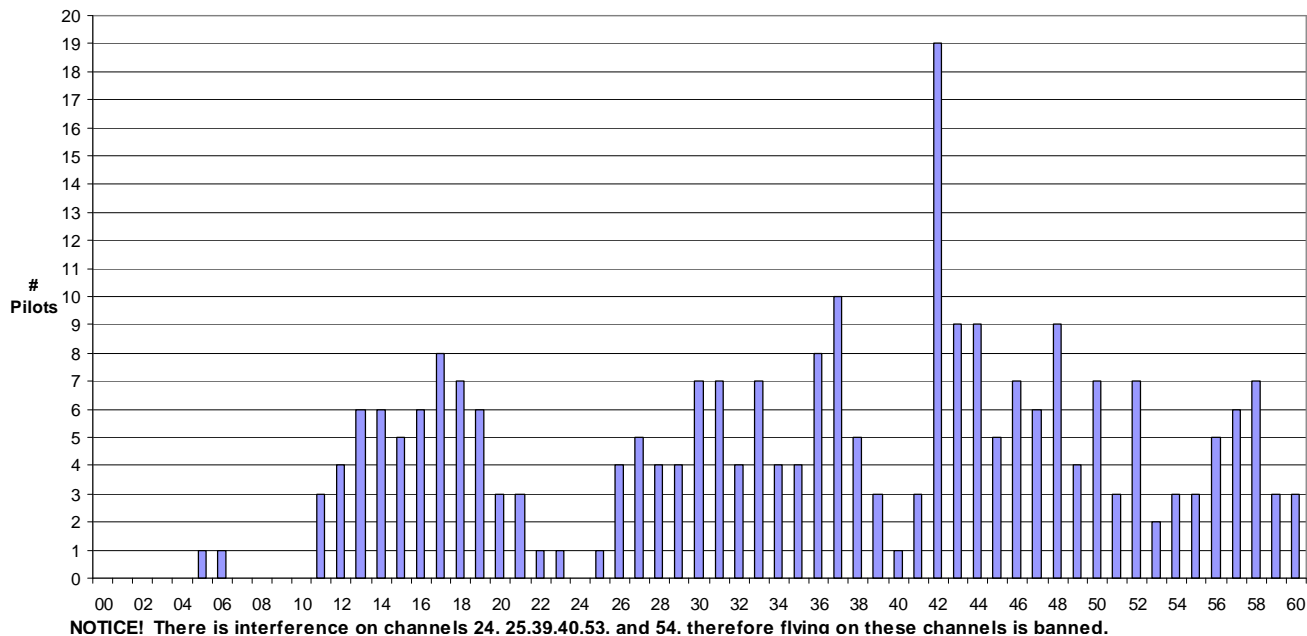
---

## Inside This Issue

*President's Corner*  
*Secretary's Notes*  
*June Events*

---

2008 - April  
Greater Southwest Modeler's Club  
Frequency/Channel Usage



**NOTICE!** There is interference on channels 24, 25, 39, 40, 53, and 54, therefore flying on these channels is banned.

Prepared and  
Maintained by Walt  
Fisher

Submit input to  
[wfisher@txrr.com](mailto:wfisher@txrr.com)  
or (817) 540 - 5921

43 Transmitters on  
2.4